

**PSAP Antibody (monoclonal) (M01)****Mouse monoclonal antibody raised against a full length recombinant PSAP.****Catalog # AT3448a****Specification**

---

**PSAP Antibody (monoclonal) (M01) - Product Information**

Application	WB, IHC, IP
Primary Accession	<a href="#">P07602</a>
Other Accession	<a href="#">BC001503</a>
Reactivity	Human
Host	mouse
Clonality	Monoclonal
Isotype	IgG2a kappa
Calculated MW	58113

**PSAP Antibody (monoclonal) (M01) - Additional Information****Gene ID** 5660**Other Names**

Prosaposin, Proactivator polypeptide, Saposin-A, Protein A, Saposin-B-Val, Saposin-B, Cerebroside sulfate activator, CSAct, Dispersin, Sphingolipid activator protein 1, SAP-1, Sulfatide/GM1 activator, Saposin-C, A1 activator, Co-beta-glucosidase, Glucosylceramidase activator, Sphingolipid activator protein 2, SAP-2, Saposin-D, Component C, Protein C, PSAP, GLBA, SAP1

**Target/Specificity**

PSAP (AAH01503, 18 a.a. ~ 524 a.a) full-length recombinant protein with GST tag. MW of the GST tag alone is 26 KDa.

**Dilution**

WB~~1:500~1000

IHC~~1:100~500

IP~~N/A

**Format**

Clear, colorless solution in phosphate buffered saline, pH 7.2 .

**Storage**

Store at -20°C or lower. Aliquot to avoid repeated freezing and thawing.

**Precautions**

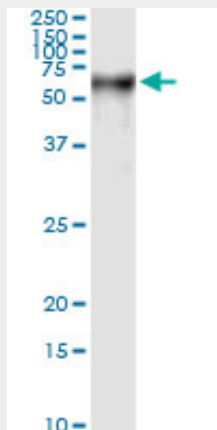
PSAP Antibody (monoclonal) (M01) is for research use only and not for use in diagnostic or therapeutic procedures.

**PSAP Antibody (monoclonal) (M01) - Protocols**

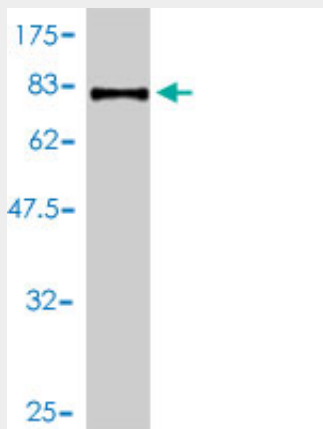
Provided below are standard protocols that you may find useful for product applications.

- [Western Blot](#)
- [Blocking Peptides](#)
- [Dot Blot](#)
- [Immunohistochemistry](#)
- [Immunofluorescence](#)
- [Immunoprecipitation](#)
- [Flow Cytometry](#)
- [Cell Culture](#)

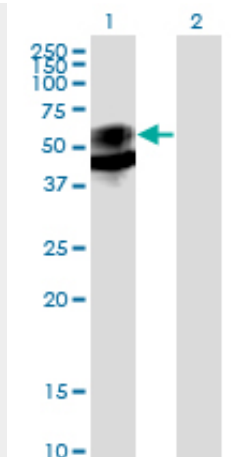
#### PSAP Antibody (monoclonal) (M01) - Images



Immunoprecipitation of PSAP transfected lysate using anti-PSAP monoclonal antibody and Protein A Magnetic Bead ([U0007](#)), and immunoblotted with PSAP MaxPab rabbit polyclonal antibody.



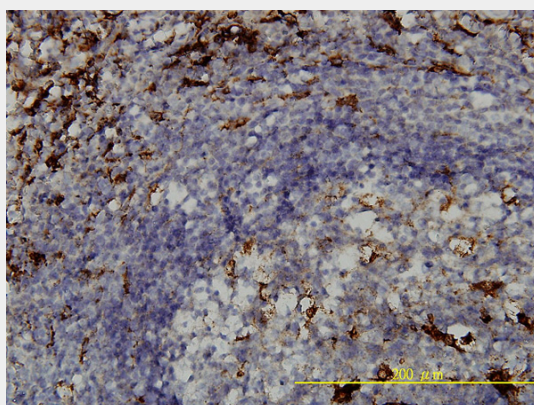
Antibody Reactive Against Recombinant Protein. Western Blot detection against Immunogen (81.29 KDa) .



Western Blot analysis of PSAP expression in transfected 293T cell line by PSAP monoclonal antibody (M01), clone 1D1-C12.

Lane 1: PSAP transfected lysate(58.1 KDa).

Lane 2: Non-transfected lysate.



Immunoperoxidase of monoclonal antibody to PSAP on formalin-fixed paraffin-embedded human spleen tissue. [antibody concentration 5 ug/ml]

### PSAP Antibody (monoclonal) (M01) - Background

This gene encodes a highly conserved glycoprotein which is a precursor for 4 cleavage products: saposins A, B, C, and D. Each domain of the precursor protein is approximately 80 amino acid residues long with nearly identical placement of cysteine residues and glycosylation sites. Saposins A-D localize primarily to the lysosomal compartment where they facilitate the catabolism of glycosphingolipids with short oligosaccharide groups. The precursor protein exists both as a secretory protein and as an integral membrane protein and has neurotrophic activities. Mutations in this gene have been associated with Gaucher disease, Tay-Sachs disease, and metachromatic leukodystrophy. Alternative splicing results in multiple transcript variants encoding different isoforms.

### PSAP Antibody (monoclonal) (M01) - References

1.Serum prosaposin levels are increased in patients with advanced prostate cancer.Koochekpour S, Hu S, Vellasco-Gonzalez C, Bernardo R, Azabdaftari G, Zhu G, Zhau HE, Chung LW, Vessella RL.Prostate. 2011 May 31. doi: 10.1002/pros.21427. [Epub ahead of print]